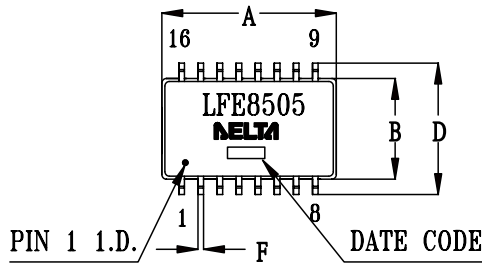




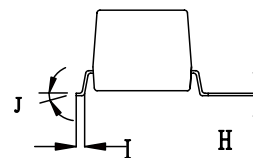
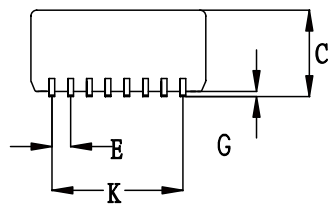
# SPECIFICATION FOR APPROVAL

CUSTOMER PART NO.: DELTA PART NO.: LFE8505 PART NAME: Lan filter	REV.: D

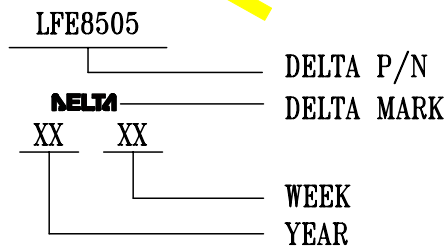
## 1. MECHANICAL DIMENSIONS :



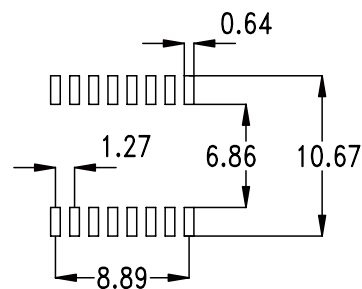
- UNIT:mm/inch
- A=12.90±0.254/0.508±0.010
  - B=7.10±0.254/0.279±0.010
  - C=5.95±0.254/0.234±0.010
  - D=9.45±0.254/0.372±0.010
  - E=1.27±0.127/0.050±0.005
  - F=0.46±0.127/0.018±0.005
  - G=0.254±0.127/0.010±0.005
  - H=0.254±0.127/0.010±0.005
  - I=0.38~1.27/0.015~0.050
  - J=0°~8°
  - K=8.89±0.127/0.350±0.005



## 2. MARKING AND RECOMMENDED PCB LAYOUT :



\*LASER MARKING\*



SUGGESTED PCB LAYOUT

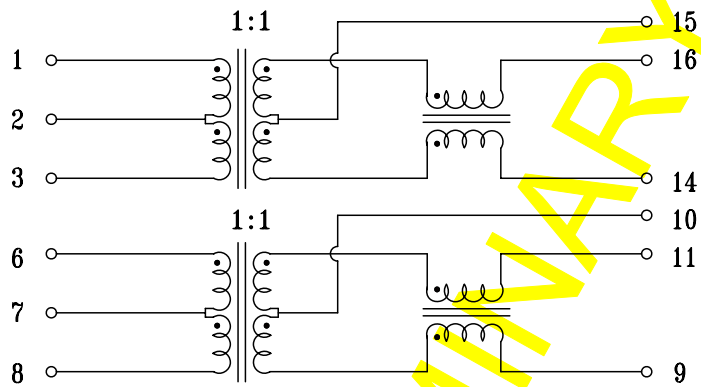
\* This specification is the proprietary of Delta Electronics, Inc.  
 \* This specification is only for preliminary review. If formal specification is required,  
 please contact with our local Sales office or Rep.



# SPECIFICATION FOR APPROVAL

CUSTOMER PART NO.: DELTA PART NO.: LFE8505 PART NAME: Lan filter	REV.: D
	<b>RoHS</b> COMPLIANT

### 3. CIRCUIT SCHEMATIC:




\* This specification is the proprietary of Delta Electronics, Inc.

\* This specification is only for preliminary review. If formal specification is required, please contact with our local Sales office or Rep.



## SPECIFICATION FOR APPROVAL

CUSTOMER PART NO.: DELTA PART NO.: LFE8505 PART NAME: Lan filter	REV.: D 
<p>4. ELECTRICAL CHARACTERISTICS (TEMP: 25°C, HUM: 65% RH)</p> <p>4.1 INSERTION LOSS: (TX &amp; RX) 1-100MHz -1.0dB MAX.</p> <p>4.2 RETURN LOSS: (TX &amp; RX) 2-30MHz -18dB MIN. 40MHz -17dB MIN. 50MHz -14.5dB MIN. 60-80MHz -12dB MIN.</p> <p>4.3 CROSS TALK: 1-100MHz -30dB MIN.</p> <p>4.4 COMMON MODE REJECTION: (TX &amp; RX) 1-100MHz -30dB MIN</p> <p>4.5 TURNS RATIO: @100KHz TX= 1:1±5% RX= 1:1±5%</p> <p>4.6 INDUCTANCE: @100KHz,0.1V 8mA DC BIAS (1-3),(6-8): 350uH MIN.</p> <p>4.7 HI-POT TEST: @60Hz (PRI TO SEC) : 1500Vrms,60SEC</p> <p>* RoHS compliant * SOLDER WIRE SAC 305 Sn 96.5/Ag 3.0/Cu 0.5 * STORAGE TEMPERATURE RANGE: -40°C~85°C * OPERATE TEMPERATURE RANGE: 0~70°C</p>	

\* This specification is the proprietary of Delta Electronics, Inc.

\* This specification is only for preliminary review. If formal specification is required, please contact with our local Sales office or Rep.